



CIVIL SERVICE OFFICERS HOUSING COOPERATIVE SOCIETY LTD.

Registered Under Kerala State Cooperative Society Act. 1969. Registration No. E 1218

Vennala - Palachuvadu Road Vennala P.O., Kochi - 682028

Phone: +91 6238 898 778 , E mail: info@thelantern.co.in

Website: www.thelantern.co.in

RERA NO:K-RERA/PRJ/O22/2021
www.rera.kerala.gov.in

Disclaimer : The plans, specifications, images and other details here in are only indicative and the Developer/Owner reserves its right to change any or all of these in its discretion subject to grand of approval from relevant authorities. This printed material does not constitute an offer, an invitation to an offer and/or commitment of any nature between the Developer/Owner and the recipient. The Developer's/Owner's website(s) and other advertising and publicity material include Artist's impression indicating the anticipated appearance of completed development. No warranty is given that the completed development will comply in any degree with such Artist's impressions. Coasts, designs and facilities and/or specifications may be subject to change without notice.



*Limited edition
luxury apartments*
Neighbourhood • Spacious • Location



- NO WALL SHARING
- SPACIOUS BALCONY
- HEAT RESISTANT POROTHERM BRICKS
- ROOF TOP INFINITY POOL
- 6 INDEPENDENT APARTMENTS PER FLOOR

- 100 CENTS
- BASEMENT + GROUND + FOURTEEN FLOORS
- EXPANSIVE CORRIDORS
- 3 BHK SUPERSIZED APARTMENTS

RERA NO:K-RERA/PRJ/022/2021
www.rera.kerala.gov.in
RERA NO:K-RERA/PRJ/022/2021
www.rera.kerala.gov.in



The Skyhigh Life

The Lantern, beams radiance so beautiful that it evokes within us the urge to ponder and reflect upon the purpose of living, of fulfilment. Emerged out of a unique dream and fulfilling idea, this coveted apartment project - The Lantern, sparked a common interest within the civil service officers fraternity to create a lifestyle where harmony defines quality. It is also inspired from the desire for community living, where like minds dwell together, where distinct intellect meets opportunity and where the inner obligation to pursue higher standards inspire other citizens to do the same. One of the main highlights of this project is the impressive rooftop infinity pool that lets you float with the clouds.

The Civil Service Officers Housing Cooperative Society Ltd. 1218 is a society registered under Kerala State Cooperative Societies Act 1969. The society has IAS/IPS/IRS and other Civil Service Officers as members. After allotment of apartments to the members, there are a few apartments available for outside sale. The same shall be sold to individuals through reference or invitation



Ornate Lobby

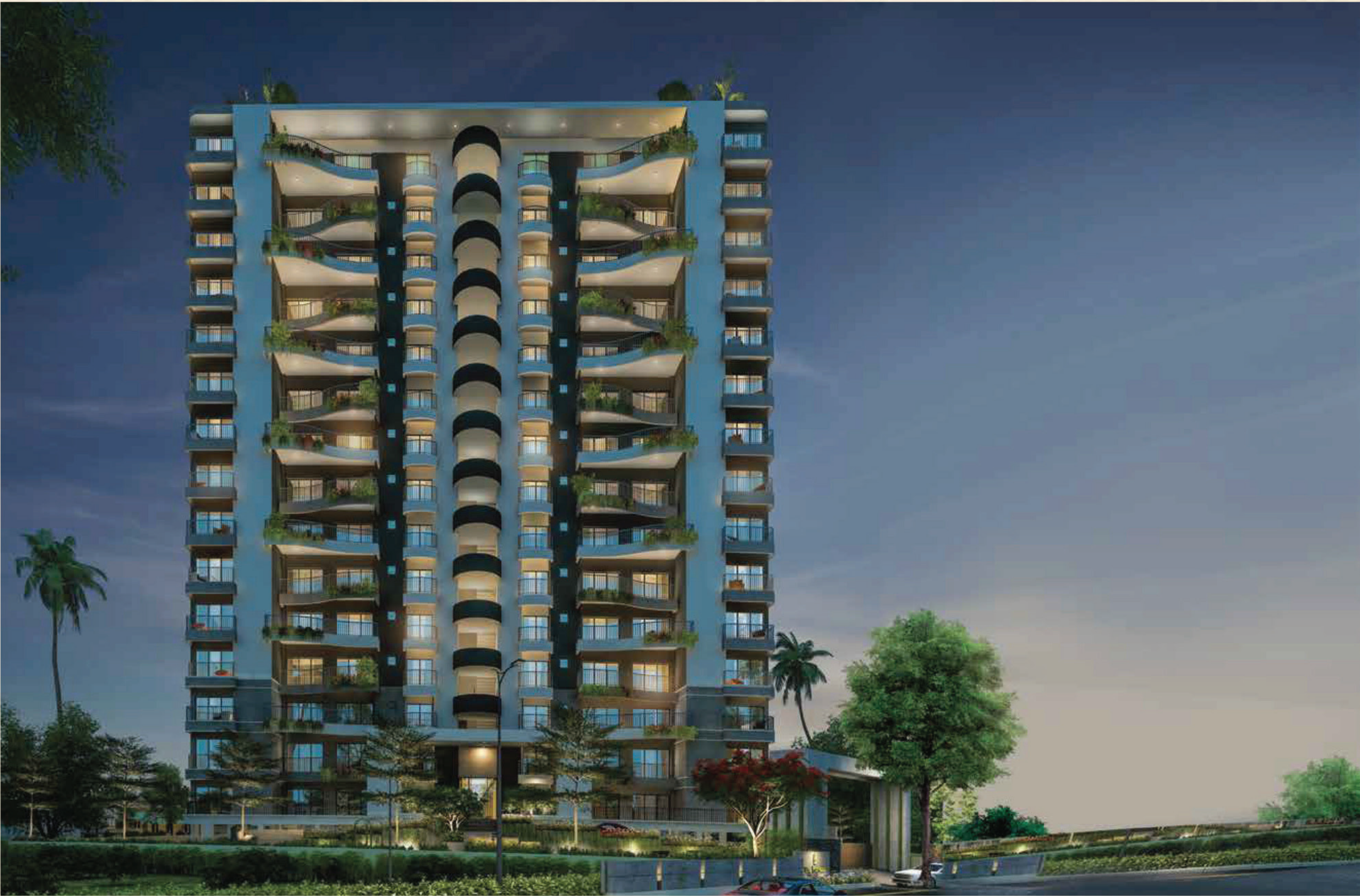
An entrance to the enchanting world of lantern, the lobby reassures the welcoming ambience of the apartment with its simple yet elegant and classy interiors. The lobby area is the right place to welcome guests, have small discussions and socialising with neighbours.

Lantern's lobby has a magic charm radiating from every element artistically blended into it. With an aura of aristocracy, this alluring area of your property is quite a possession to take pride in.



Expansive Corridors

The corridors of the Lantern at all floors are so expansive and has planters on sides of each apartment which makes one feel like walking through a beautiful and large garden. These corridors gives the apartment complex an airy and open feel which is a rarity in most of the apartments in Kochi.



ALL COMFORTS EASE OF LIVING



Basement parking with lift access



Centralized gas supply with individual meters



Extra spacious balconies with planters



Lobby with state of the art design



Ample parking space



Children's park and garden



Rooftop infinity pool



Well equipped gymnasium



Club House with games and reading



Solar power for common areas



Intercom/cable TV connection



Caretakers room



Automatic gate with security system



Car wash area



Sewage treatment plant/
Rain water harvesting



Drivers room with attached toilets



D. G power system



Rooftop conference hall and garden
for parties and family functions



Formal Living

The formal living room gives privacy in as much as, guests can be entertained without actually needing to disturb the cosy living spaces of the family. Entertain your guests over a cup of coffee in this welcoming ambience.



Family Living & Spacious Dining

A healthy breakfast or a sumptuous hot meal or a classy dinner is best served in this airy and open dining area with the whole family.

Nothing more rewarding than to unwind along with the family, watching a movie or sharing jokes in the exclusive family living area.



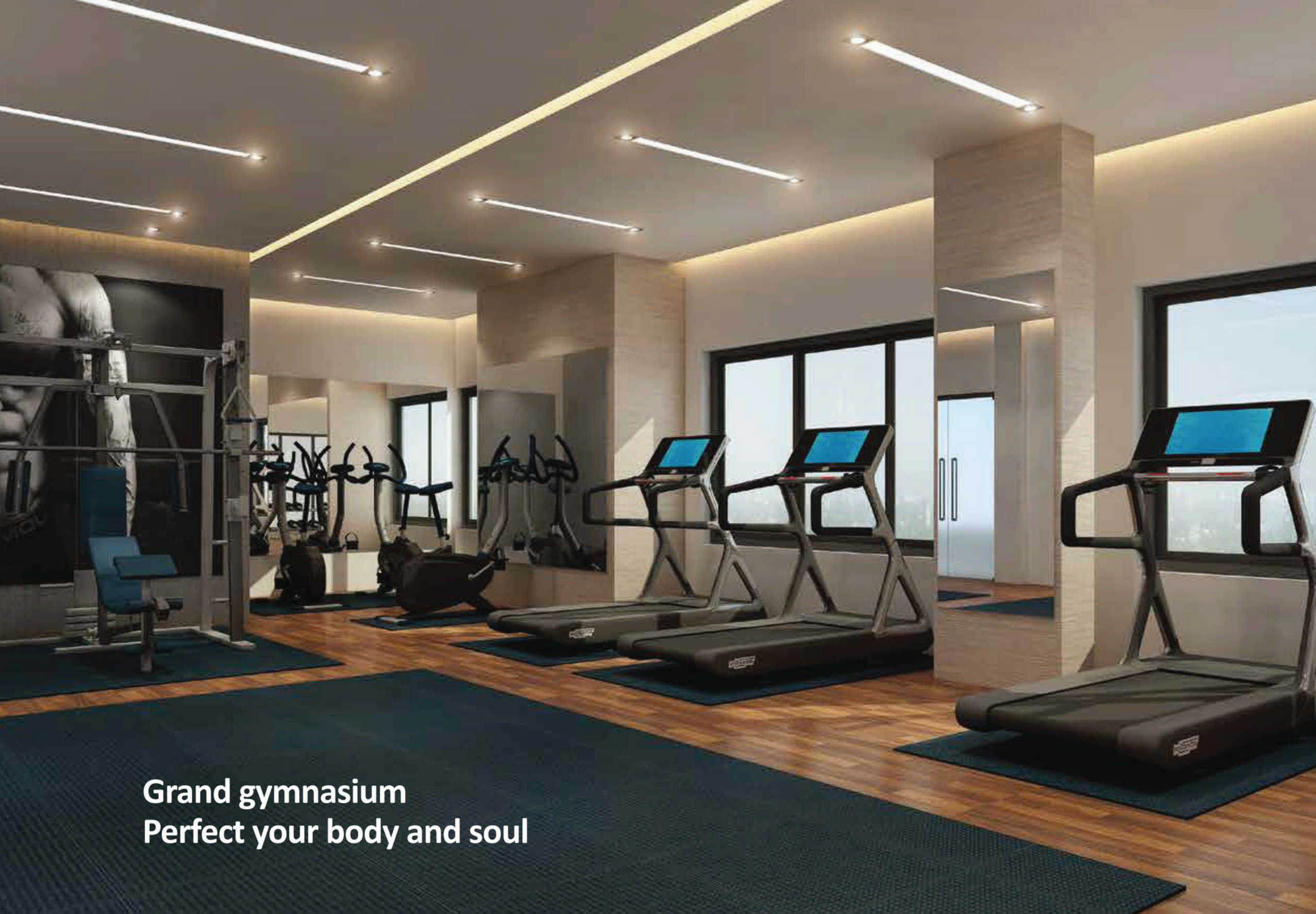
Classic kitchen created for cuisines

The highly functional cooking space with option for open kitchen concept redefines the traditional nature of home cooking. Most modern modular kitchen concepts can be implemented at ease. The connected drying balcony, store room and servants area are all features not available elsewhere.



Spacious Bedrooms

Designed to impress your aesthetic senses to the core, Lantern features tranquil spaces to offer a good night's sleep in the most meaningful way. When adorned with sophisticated lighting systems and complementing bedroom decors, these splendid sleep zones get you the extra-ordinary feeling of luscious lifestyle rich in class



Grand gymnasium
Perfect your body and soul



Children's play area
and garden



Rooftop Infinity Pool

The rooftop infinity pool is the jewel in the crown of Lantern. It's a rarity in Kochi. This pool of architectural excellence offers you an extravagant experience of floating in the sparkling waters, which reflects the crazy clouds moving along the vast blue skies above.



Floor Plan A 2825 sq.ft

Floors: 2, 4, 6, 8, 10, 12, 14

Furniture and fixtures are indicative only. Variations may occur in area/ dimensions. all dimensions are in centimeters

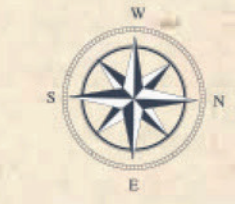


Floor Plan A1 2760 sq.ft

Floors: 1, 3, 5, 7, 9, 11, 13

Furniture and fixtures are indicative only. Variations may occur in area/ dimensions. all dimensions are in centimeters





Floor Plan B 2595 sq.ft

Floors: Ground, 2, 4, 6, 8, 10, 12, 14

Furniture and fixtures are indicative only. Variations may occur in area/ dimensions. all dimensions are in centimeters



Floor Plan B1 2520 sq.ft

Floors: 1, 3, 5, 7, 9, 11, 13

Furniture and fixtures are indicative only. Variations may occur in area/ dimensions. all dimensions are in centimeters



Floor Plan C 2820 sq.ft

Floors: Ground, 2, 4, 6, 8, 10, 12, 14

Furniture and fixtures are indicative only. Variations may occur in area/ dimensions. all dimensions are in centimeters

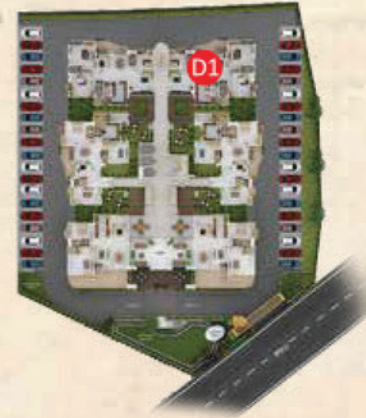


Floor Plan C1 2755 sq.ft

Floors: 1, 3, 5, 7, 9, 11, 13

Furniture and fixtures are indicative only. Variations may occur in area/ dimensions. all dimensions are in centimeters





Floor Plan D 2820 sq.ft

Floors: Ground, 2, 4, 6, 8, 10, 12, 14

Furniture and fixtures are indicative only. Variations may occur in area/ dimensions. all dimensions are in centimeters



Floor Plan D1 2755 sq.ft

Floors: 1, 3, 5, 7, 9, 11, 13

Furniture and fixtures are indicative only. Variations may occur in area/ dimensions. all dimensions are in centimeters



Floor Plan E 2595 sq.ft

Floors: Ground, 2, 4, 6, 8, 10, 12, 14

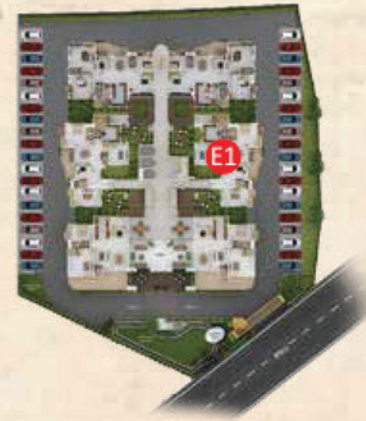
Furniture and fixtures are indicative only. Variations may occur in area/ dimensions. all dimensions are in centimeters



Floor Plan E1 2520 sq.ft

Floors: 1, 3, 5, 7, 9, 11, 13

Furniture and fixtures are indicative only. Variations may occur in area/ dimensions. all dimensions are in centimeters





Floor Plan E 2595 sq.ft

Floors: Ground, 2, 4, 6, 8, 10, 12, 14

Furniture and fixtures are indicative only. Variations may occur in area/ dimensions. all dimensions are in centimeters



Floor Plan E1 2520 sq.ft

Floors: 1, 3, 5, 7, 9, 11, 13

Furniture and fixtures are indicative only. Variations may occur in area/ dimensions. all dimensions are in centimeters





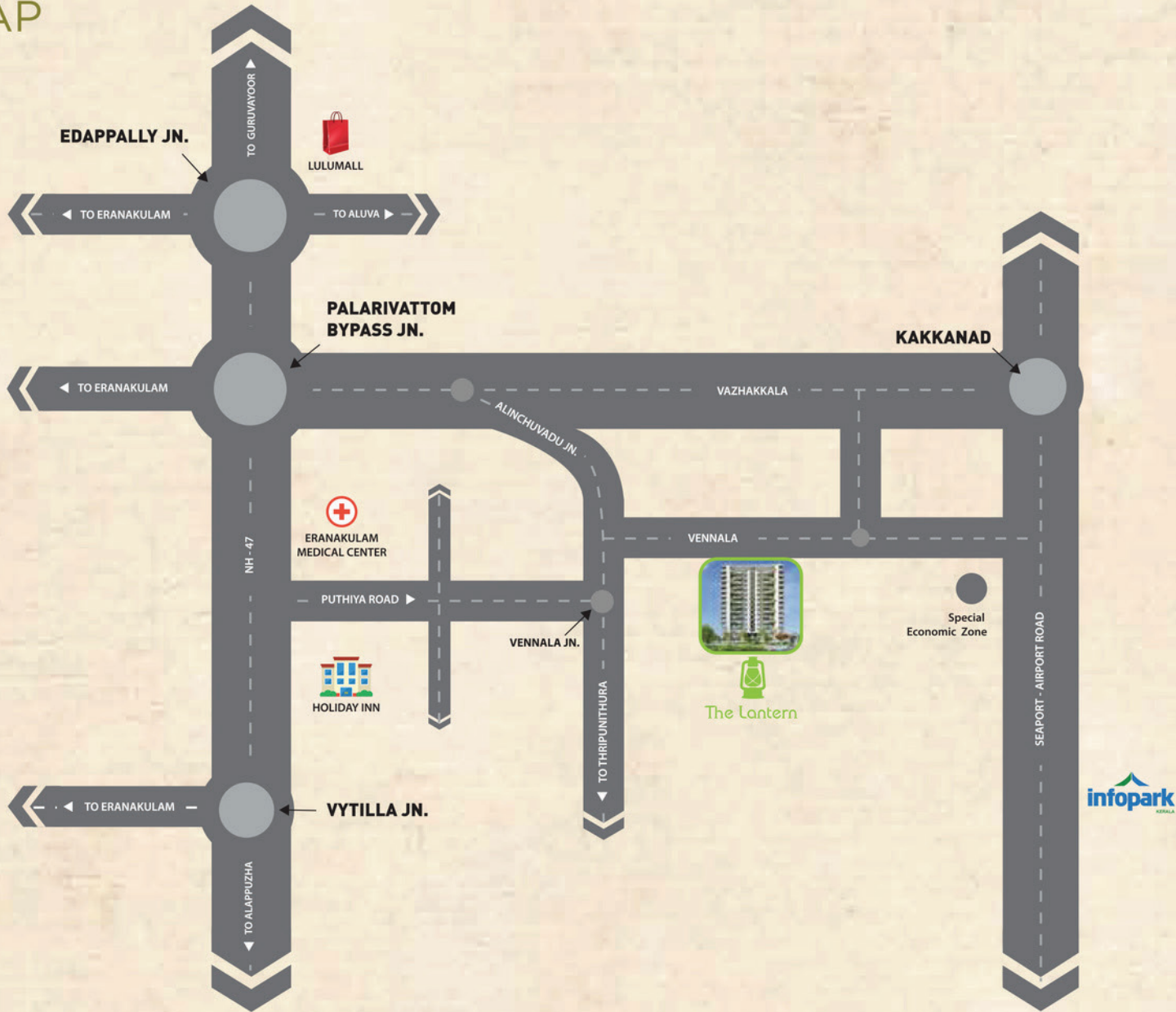
TYPICAL FLOOR

Furniture and fixtures are indicative only. Variations may occur in area/ dimensions. all dimensions are in centimeters



Club House

LOCATION MAP



PROXIMITY :

| | | | |
|----------------------------|--------|---|--------|
| • Ernakulam medical centre | 2.1 km | • Palarivattom bypass junction | 2.2 km |
| • Vytilla junction | 4.8 km | • Lulu Mall | 5.0 km |
| • Infopark | 5.2 km | • Rajagiri christu jayanthi public school | 5.4 km |

SPECIFICATIONS



- STRUCTURE**
- Earthquake resistant RCC framed structure with premium brand Weinberger POROTHERM bricks for thermal insulation structure and cooling



- FLOORING**
- High quality vitrified flooring for entire building.
 - Rustic tiled flooring and ceramic tile up to 60 cm from counter top in kitchen
 - Anti-skid tiles on floor and Dadoing using ceramic designer tiles on walls of toilets



- KITCHEN & UTILITY SPACE**
- Centralized gas connection with independent meter



- PLUMBING & SANITARY / CP FITTINGS**
- White colored high quality sanitary fittings
 - Branded CP fittings



- GENERATOR**
- Power backup for lifts, common lights, common equipments and common motors, and for select lights in flats



- ELECTRICAL**
- Three phase power supply with concealed wiring in PVC conduits using wires of V-Guard, Finolex or equivalent, Branded modular switches controlled by EMLCB
 - TV points in living room and master bedroom, A/c point in all bedrooms and living rooms



- PAINTING**
- Putty finished emulsion paint for interior, weather coat for exterior, enamel painting for woodwork and MS grills



- JOINERY DETAILS**
- Main door: Teak wood door frame with teak wood panel door of standard design pattern along with good quality accessories and branded locks
 - All Internal rooms shall have elegant flush doors
 - Windows & Ventilators: UPVC frameworks with glass



- WATER SUPPLY**
- Abundant water supply from overhead tank with individual metering



- EXCLUSIONS or EXTRAS THAT CAN BE ADDED**
- Interior Designing and Decoration Works, False ceiling, Electrical & Electronic Equipment, Furniture, etc.